



Single Family Home

The Mora

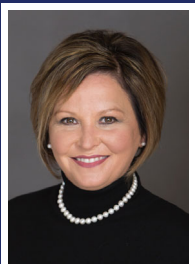
**Two-Story
4 Bedroom / Office**

Mora is located in Dalarna County, Sweden. Mora is where some of Sweden's earliest buildings were found and is located between Lake Siljan and Lake Orsasjön in the center of Sweden.



Continuing the Little Sweden tradition, we have designed this villa with a Scandinavian touch - yet each with its own distinct characteristics.

This spacious 2-story vacation home offers you and your family 2,600 square feet of living space. Featuring 4 bedrooms, 2 1/2 full baths, a large living area with fireplace, dining room with well-appointed kitchen, office, sunroom, walkout deck overlooking a breathtaking woodland view, utility room, plenty of storage space, and a 3 car garage.



Come see for yourself... at Hedemora Hills

8984 Hwy 42 | Fish Creek, WI 54212

Heather Smith | 920-493-6535

Heather@HeatherSmithHomes.com

www.HeatherSmithHomes.com



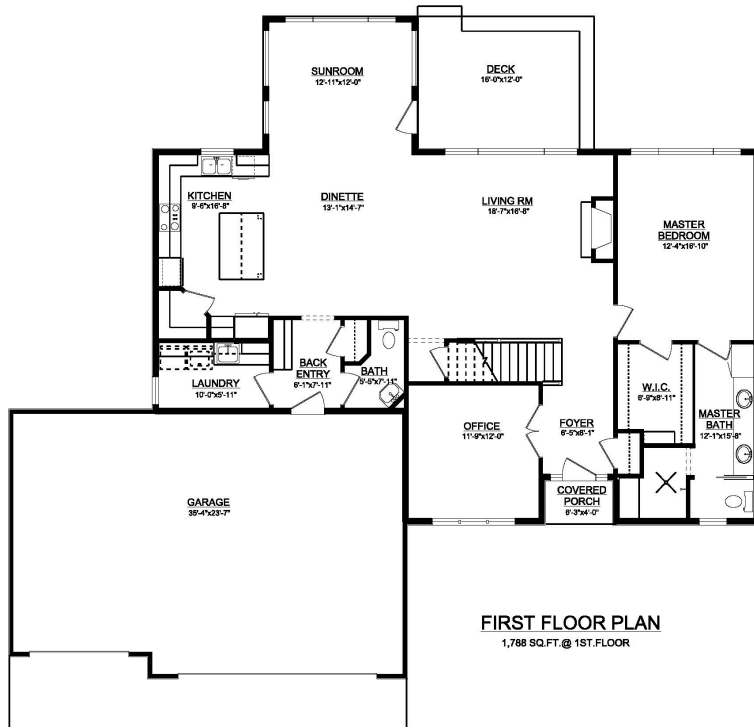
**COLDWELL
BANKER**

REAL ESTATE GROUP

The exclusive marketing agent for Hedemora Hills is Heather Smith. Please contact her if you want additional information, wish to schedule a tour, or desire to make an offer to purchase one of the properties.

Floor Plan

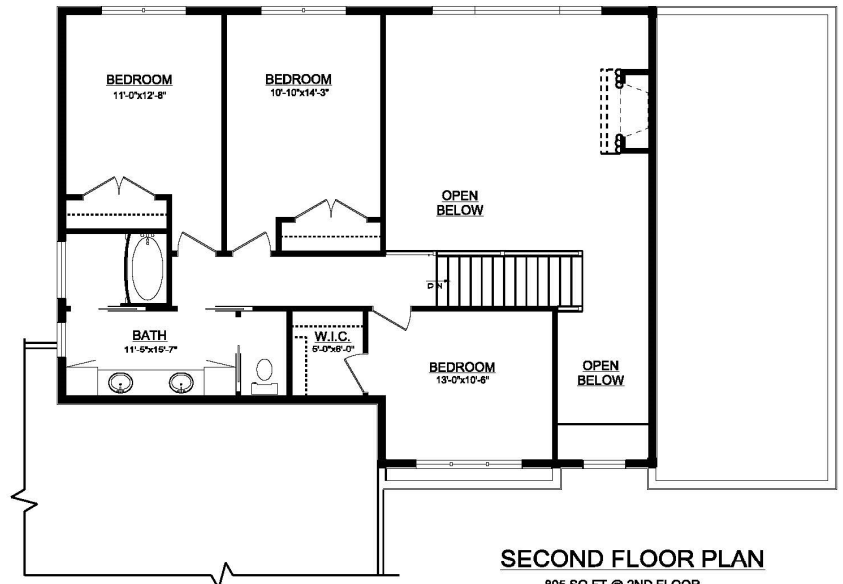
The Mora (4 Bedroom)



First Floor

FIRST FLOOR PLAN
1,788 SQ.FT. @ 1ST.FLOOR

Second Floor



SECOND FLOOR PLAN
806 SQ.FT. @ 2ND.FLOOR