

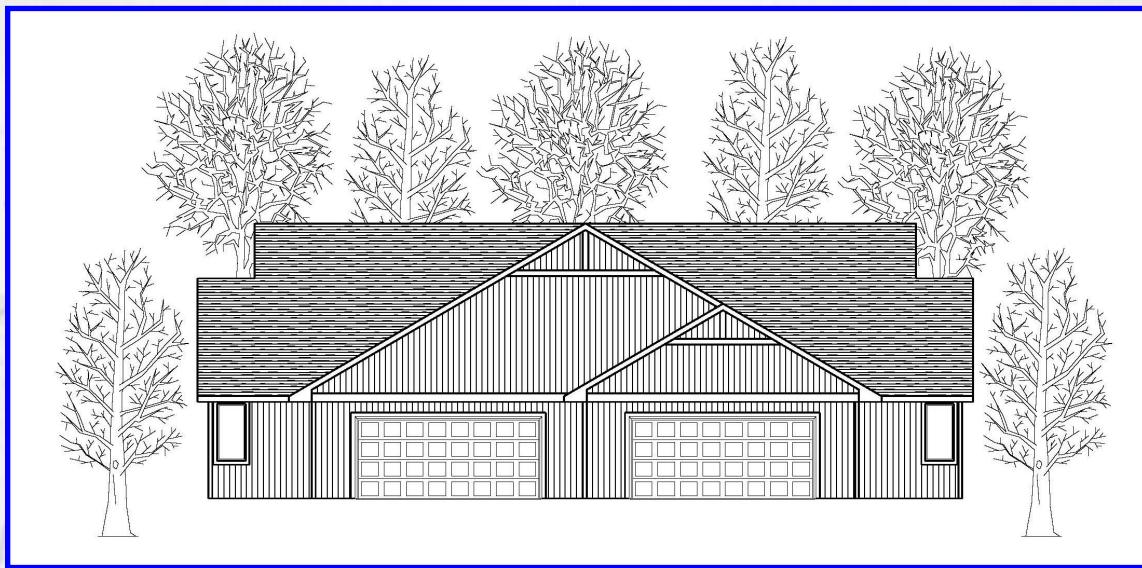


Duplex Home

Skane III

**One-Story
3 Bedroom / Walkout**

Skane is a providence in Sweden. Located on the peninsular southern tip of Sweden, it is bounded by water on three sides much like Door County Peninsula. It is of great importance as Sweden's chief food producer, which is why it is often called the "granary of Sweden."



Continuing the Little Sweden tradition, we have designed this villa with a Scandinavian touch - yet each with its own distinct characteristics.

This spacious one-story walk out vacation home offers you and your family 2,332 square feet of living space. Featuring 3 bedrooms, 3 baths, a large living space with fireplace, dining room with well-appointed kitchen, a walkout deck, a utility room, a large family room on the lower level and a two-car garage.



Come see for yourself... at Hedemora Hills

8984 Hwy 42 | Fish Creek, WI 54212

Heather Smith | 920-493-6535

Heather@HeatherSmithHomes.com

www.HeatherSmithHomes.com

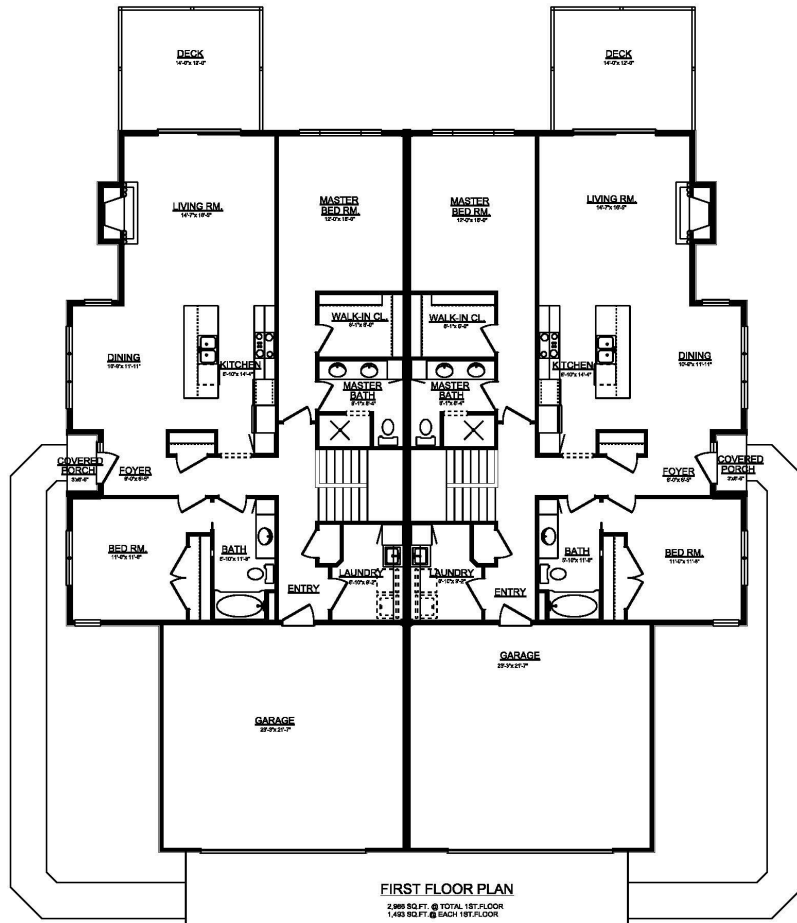


**COLDWELL
BANKER**
REAL ESTATE GROUP

The exclusive marketing agent for Hedemora Hills is Heather Smith. Please contact her if you want additional information, wish to schedule a tour, or desire to make an offer to purchase one of the properties.

Floor Plan

The Skane III (3 Bedroom Walkout)



First Floor

Foundation

